

Article title here in title case

Subtitle in Title Case (Optional)

Firstname Lastname^{1,*}, Firstname Lastname²

¹Author Affiliation, City name, Country name

²Author Affiliation, City name, Country name

*Corresponding author email: author@example.com

ABSTRACT

Each paper must include an abstract. The abstract should be a concise statement of the main objectives, methodology, results, conclusions and practical significance of the research work described within a paragraph of 250-300 words. Abstracts should be written in Times New Roman font, 10pt font, with line spacing at least 13 pt. To format your abstract, please use the Microsoft Word template style: [Abstract]. Do not cite references in the abstract.

Keywords: Write the keywords at the bottom of the abstract, and please do not write any more than 5 words or phrases. Put a comma (,) between keywords, "Times New Roman", 11 pt, line spacing at least 13 pt, spacing before 12 pt, after 22 pt, centered, "Italic" on the line. To format your keywords, please use the Microsoft Word template style: [Keywords].

1. INTRODUCTION

This template can be used to prepare manuscripts for EST2025 extended abstract. The article to be published in a special issue of the Mongolian Journal of Geography and Geoecology is written in English. "Header", "Footer", "Footnote" commands will not be used, and page numbers will not be set. For the preparation of a new manuscript, using A4-sized papers is highly recommended.

Subsection font "Times new roman", 11.5 pt, "bold" left aligned, line spacing at least 12.05 pt, spacing before 12 pt, after 9 pt, all letters are capitalized. Numbering is written in Roman numerals.

The main text font "Times New Roman", 10pt, paragraph (first line by 0.51 cm), line spacing at least 12 pt, spacing before 0 pt, after 6 pt. The main text is divided into 2 columns and the distance between the columns is 0.75 cm.

2. RESEARCH METHODS

The methodology used in the study should be written in detail, including the location of the study,

the characteristics of the samples (soil, water, plants), and the methods of sampling and analysis of the samples. These include: methods used in research, research materials, experiment, place and time of research, analysis methods, etc.

When entering equations and formulas into the text, use the "Equation" program of Microsoft Word, the letter height of mathematical expressions should be 10pt, and the line should be aligned to the left. The numbering should be written in parentheses at the end of the line where the formula or equation is written, and the line should be aligned to the right. An example is as follows:

$$\frac{-b \pm \sqrt{b^2 - 4ac}}{2a} \quad (1)$$

$$(x + a)^n = \sum_{k=0}^n \binom{n}{k} x^k a^{n-k} \quad (2)$$

3. RESULT AND DISCUSSION

According to the methodology of that research, the results obtained are different from those of other researchers, what are their weaknesses and strengths, and they are compared in detail only within the scope

of that topic. The research results are presented in pictures, graphs, tables, and diagrams, and explanations are provided.

Figures and tables should be centered. Both figure and table captions should be Times New Roman font 10 pt, and enumerated using Arabic numbers. Examples are as follows:

Each figure has a caption, and the caption is centered just below the image. Numbering of the figure (**Figure 1.**) with the description.

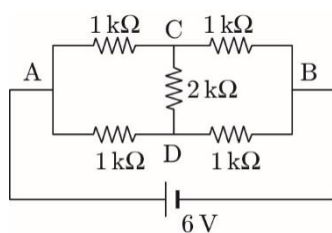


Figure 1. A figure caption

Place the table number and title on the same line at the top of the table. Numbering of the table (**Table 1.**) with the description.

Table footnotes should be written in 9pt font size and in “Italic” format. Each footnote in the table starts on a new line.

Table 1. A table caption

Styles	Shortcuts
Article-Title	Alt+A
Author-Name	Alt+N
Affiliation	Alt+L
Corresponding	Alt+C
Abstract	Alt+B
Key words	Alt+K
Equation	Alt+E
Para	Alt+P
Head 1	Ctl+1
Reference item	Alt+R

4. CONCLUSION

ACKNOWLEDGMENTS

The names and numbers of the individuals, organizations, scientists, researchers, teachers who helped to conduct the research and help in obtaining certain results, as well as the organizations and projects that provided assistance and support in the funding of the research work should be clearly mentioned in the acknowledgments section.

REFERENCES

Academic articles, books, and reports cited in the text should be listed in the order of their appearance in the 'Materials Used' section. All references included in this list must be cited in the text. Citation numbers should be assigned sequentially from the beginning of the article and enclosed in square brackets, e.g., [1]. Periods and commas should be placed after quotation marks. For the reference list, use 'Times New Roman' font, size 10 pt. Tools such as Zotero and Mendeley can assist in generating citations in accordance with the IEEE (Institute of Electrical and Electronics Engineers) citation style.